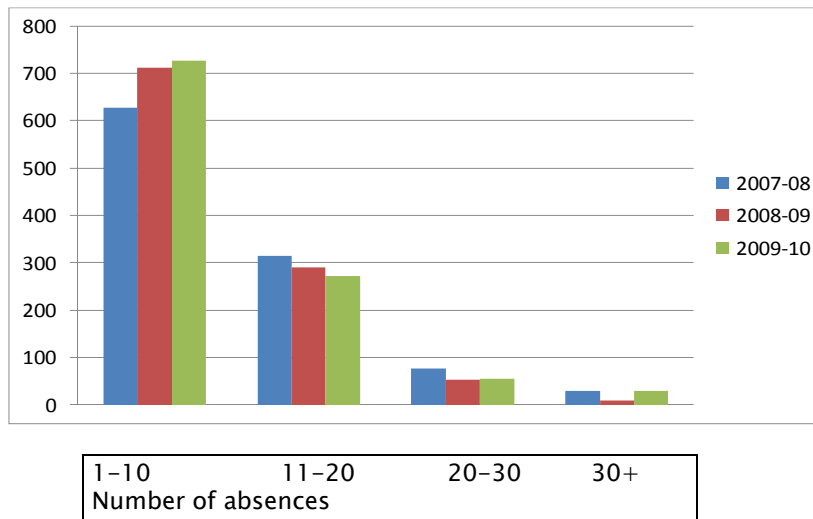


Landrum Middle School Attendance Policy Be Here Now!

Three Year Trend at Landrum



Why Should I Care?

- State Statute : It's the Law!
- Attendance correlates with Academic Success
- School Grade is higher
- Correlation between years of education and salary potential

- Dropouts contribute disproportionately to the unemployment rate. In 2001, 55 percent of young adult dropouts were employed, compared to 74 percent of high school graduates and 87 percent of college graduates.
- Dropouts contribute to state and federal taxes at about one half the rate of high school graduates. Over a working lifetime, a dropout will contribute about \$60,000 less.

- ▶ 75% of state prison inmates and 59% of federal inmates are high school dropouts
- ▶ High school dropouts are 3.5 times more likely than graduates to be incarcerated.

Policy

- ▶ Teachers report attendance at the beginning of each period
- ▶ AlertNow automated call out for every absence
- ▶ 5 unexcused absences within three calendar months: mailed notification to parent
- ▶ **10 unexcused absences:** parent conference with Response to Intervention Team, mailed notification to parent.

Florida gets tough

- ▶ **15 days unexcused absences:** certified truancy petition sent to district from the State Reporting personnel with a copy to parent.
- ▶ The Florida Legislature enacted requirements that schools report to the Department of Highway Safety and Motor Vehicles (DHSMV) the names, birth dates, gender, and social security numbers of minors who attain the age of 14 and accumulate 15 unexcused absences in a period of 90 calendar days. The legislation further provides that those students who fail to satisfy attendance requirements will be ineligible to maintain or obtain driving privileges.

What's the Difference between Excused and Unexcused?

- ▶ **Excused:** Personal illness, death in the family, religious holiday, required court appearance, scheduled doctor/dentist appt. head lice or communicable disease, pre-approved special events
Coursework, tests and quizzes can be made up at 100% credit
- ▶ **Unexcused:** Shopping trips, pleasure trips, suspension from school, truancy, appointments or events without prior approval
Coursework may be made up at only 50% credit and tests and quizzes can be made up at 100% credit

After 15 days of absence, whether excused or unexcused, a student must have a doctor's verification for all subsequent absences.

When you Attend...

- ▶ You keep up with your school work.
- ▶ You help increase your chances of achieving passing grades and improving FCAT scores

Attendance Agreement

I _____, understand the St. Johns County School District and Landrum Middle School Attendance Policies and expectations, including the difference between excused and unexcused absences as well as the consequences for failure to attend school.

I also understand that if I fail to attend school regularly and in accordance with both policies, I will receive appropriate consequences. I further understand that if I do not attend regularly, I am indicating by my behavior my willingness to give up my right to a driver's license.

Student Signature

Date